

Trailer for MXV Chute & Bracket Hookup Installation

Hardware Kit 62900302

For questions about this product, or for parts inquiries, please contact our Customer Service Center listed below.

The following parts are included in the "MXV Chute Trailer Package":

Item No.	Description	Qty
62173612	MXV trailer frame & 2 brackets	1
2268041	Wheel rims 5x15 5-bolt (tires excluded)	2
2268042	Wheel bolts	10
2868017	Pin, linch 7/16" x 1 3/4" plated	2
62900302	MXV chute trailer hardware bag	1
3188116	Screw, HHC 1/2" x 1 1/4" grade 5 plated	4
2688128	Nut, hex lock 1/2" (unlined)	4

The following tools will be needed to attach the MXV Chute Trailer Brackets to the MXV Chute.

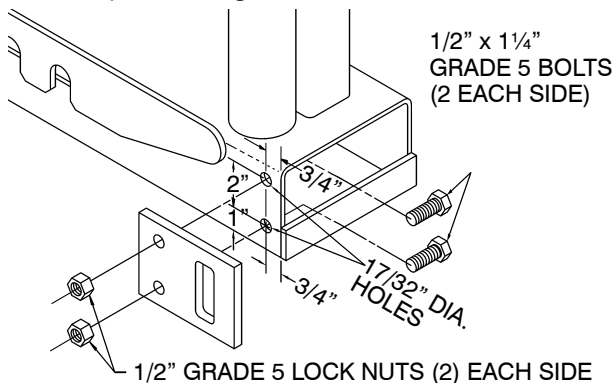
- (2) each 3/4" wrenches or a wrench and 3/4" socket with ratchet.

NOTE: If your MXV Chute does not have pre-drilled holes for the brackets, follow steps 1-4, otherwise skip to step 5.

You may need these additional tools if your MXV Chute doesn't have mounting bracket holes pre-drilled for the MXV Chute Trailer brackets. The earlier chutes did not include these holes.

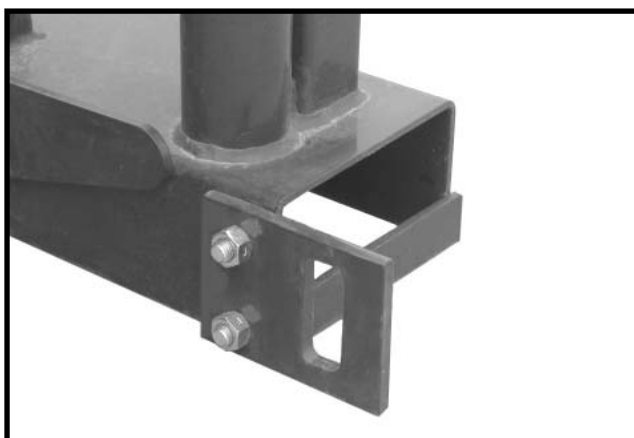
- A 1/8" pilot drill bit and a 17/32" drill bit and drill.
- "C" clamp or adjustable clamping pliers.
- Tape measure, scribe or awl, and adjustable tri-square.

1. Using the tape measure, scribe or awl and the tri-square; lay out the hole pattern as shown in the example drawing on the chute channel below.



2. Using the "C" clamp or adjustable clamping pliers, firmly clamp the MXV Chute Trailer Brackets to the tailgate channel centering the bracket holes over the layout hole patterns. (Be sure the holes are centered on the layout pattern).
3. Using a drill and the 17/32" drill bit; place the bit in the holes of the MXV Chute Trailer Bracket and drill long enough to make a centering point. Do this for both holes in bracket.
4. Next, place the 1/8" pilot bit in the drill and continue drilling the holes in the tailgate channel all the way through by centering the bit on the center points made earlier by the 17/32" bit. Once the pilot hole is drilled, place the 17/32" drill bit back in the drill and continue drilling out the holes.
5. Next locate the "SCREW HHC 1/2" x 1 1/4" GR 5 PLATED" and place the bolt from the inside of the channel, through the hole and position the plate on the bolt with the hookup slot in the bracket facing away from the trailer. Attach the "NUT HEX LOCK 1/2" (UNLINED)" to the bolt and using the 3/4" ratchet or wrench, tighten the fasteners very snug.

(NOTE: It is a good practice to check the tightness of the nuts and bolts periodically to assure they don't loosen during transport.)



Bracket shown attached to chute

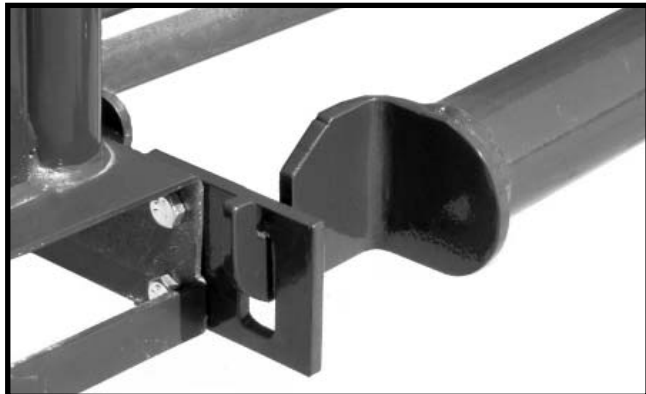
Behlen® COUNTRY

CUSTOMER SERVICE CENTER

PO Box 569
Columbus, NE
68602-0569

Ph: 800-447-2751
Fax: (402) 563-7447
www.behlencountry.com

6. After the trailer brackets have been attached, move the trailer to the chute by hand and hook the rear cogs in the chute trailer to the newly attached chute brackets. (See Below)



Once these are in place, apply downward pressure to the hitch area of the trailer and insert the slide pins in the front channel of the trailer on each side. (See Below)



Rotate the slide pins towards the rear of the chute lining up the safety pin holes and insert a lynch pin on each side to secure the slide pins.

PLEASE NOTE:

The coupler hitch requires a 2" ball to tow the trailer and chute.

15" tires are to be provided by the end user.

CAUTION! TOWING SPEED NOT TO EXCEED 20 MPH - NOT INTENDED FOR HIGHWAY USE

The safety chain provided must be attached to the towing vehicle.



The chute and trailer have been designed to be evenly balanced for easy maneuverability.

Applying downward pressure to the rear of the attached chute will easily raise the tongue.