

Windvane Feeder

WV-4600 (28040307)

Hardware Kit

28300878

THANK YOU FOR PURCHASING THIS PRODUCT

For questions about this product, or for parts inquiries, please contact our Customer Service Center listed below.

Before beginning, read instructions thoroughly and inspect parts listing to ensure that all parts have been included.

1. Attach Arm Weldment (4) to Base Weldment (3) with two 3/8" x 2" Hex Bolts (12) and 3/8" Hex Lock Nuts (11). **IMPORTANT: Make sure the tube on the end of the Arm Weldment (4) is vertical and over the center of the Tub.**
2. Place Steel Ball (7) into the tube on the end of the Arm Weldment (4). Insert the stud on the Hood Support Weldment (5) into the tube on the end of the Arm Weldment (4). The stud should be riding on top of the Steel Ball (7) and pivot freely. **NOTE:** Paint may cause the Hood Support Weldment not to turn freely, but rotating around several times should free it. It is best to lubricate this pivot point with grease.
3. Insert a 1/4" x 3/4" Carriage Bolt (9) down through top of Hood Support Weldment (5). Fasten Clip (8) to bottom of Hood Support Weldment using a 1/4" Std. Washer (16) and 1/4" neoprene lined Nut (10). The Hood Support Weldment should still turn freely and should be held on by the Clip (8).
4. Fasten the Poly Hood (1) over the Hood Support Bands (6) with eight 1/4" x 3/4" Hex Bolts (15), eight 1/4" neoprene lined Nuts (10) and four 1/4" Std. Washers (16). **IMPORTANT: At this point, do not put a bolt in the two center holes.**
5. Fasten the assembled Hood Support Bands (6) and Poly Hood (1) to the Hood Support Weldment (5) at the 2 center holes with eight 1/4" x 1" Hex Bolts (14), two 1/4" Std. Washers (16) and two neoprene lined Nuts (10).

PARTS LISTING

No.	Description	Part No.	Qty.
1	Poly Hood w/windvane	2958371	1
2	1½ Bushel Tub	28107908	1
3	Base Weldment	28400357	1
4	Arm Weldment	28400337	1
5	Hood Support Weldment	28400247	1
6	Hood Support Band - long	28601228	2
•	Hardware Package (includes all of the following)	28300878	1
7	Steel Ball	1088004	1
8	Clip	28600198	1
9	* Bolt, Carriage 1/4" x 3/4" Plated	1328156	1
10	* 1/4"- 16 Lock Nut, neoprene lined	2688059	11
11	* 3/8"- 16 Lock Nut, zp	2688129	2
12	* Bolt, Hex 3/8" x 2"	3188018	2
14	* Bolt, Hex 1/4" - 20 x 1" zp	3188040	2
15	* Bolt, Hex 1/4" - 20 x 3/4" zp	3188066	8
16	* Washer, Std. 1/4" zp	3948016	11

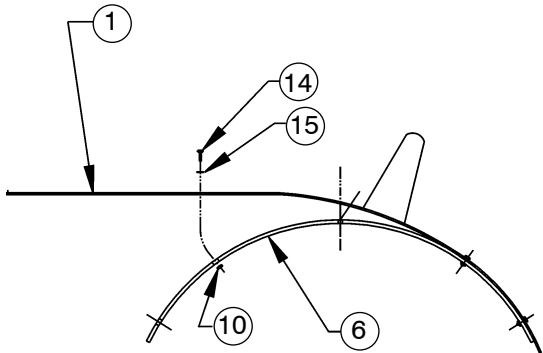
* Standard hardware items - may be purchased locally.

Behlen[®]
COUNTRY

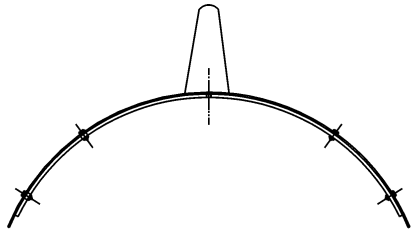
CUSTOMER SERVICE CENTER

PO Box 569
Columbus, NE
68602-0569

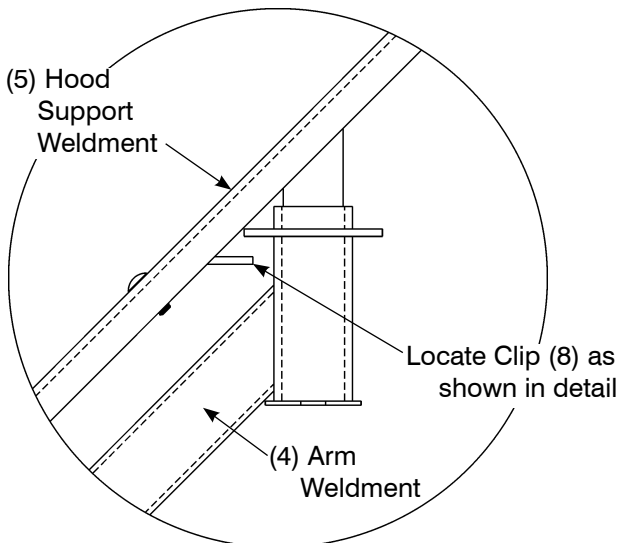
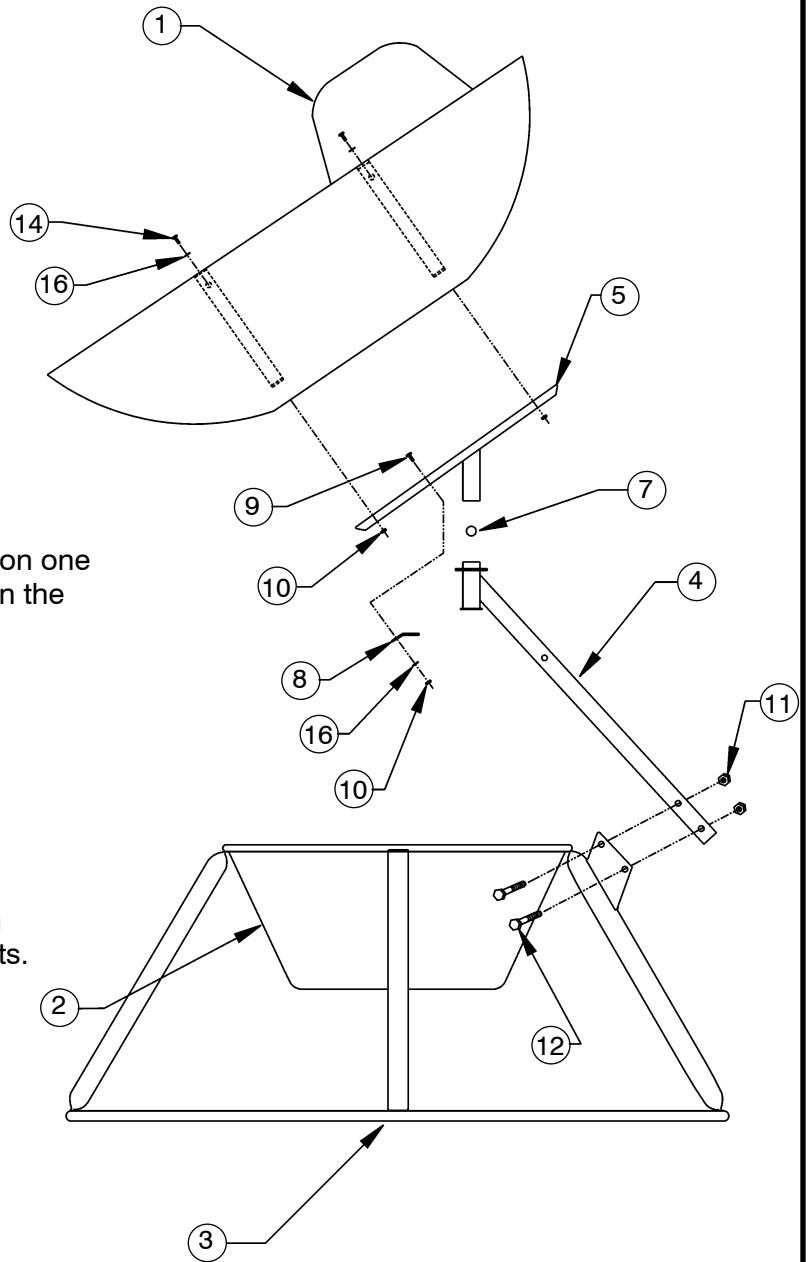
Ph: 800-447-2751
Fax: (402) 563-7447
www.behlencountry.com



1) When bolting on the poly hood, start on one side and keep nuts loose until bolts on the other side have been started.



2) After bolts on both sides have been placed, tighten all four nuts and bolts.



Clip Placement Detail