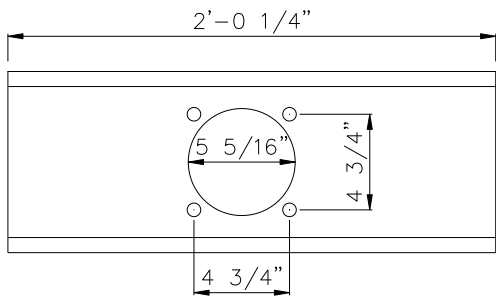


**80110060YEL**  
**6' ROTARY CUTTER**



6' FRONT A ARM BRACE  
 80634070YEL

SWIVEL HITCH  
 80412770YEL

A-FRAME 3 1/2"  
 BUSHING-80634080YEL

A FRAME ARM  
 LH & RH-80633890YEL

CAT 1 LIFT ARM PIN  
 7/8"-3018352

6' STUMP JUMPER  
 40HP 12 SPLINE  
 2088026

6' BLADES-3018435

BLADE BOLT-1308012

BLADE BOLT NUT  
 1308015

BLADE BOLT  
 LOCK WASHER-1308016

PTO SHAFT 35"-1728012

40HP GEAR BOX  
 1:1.47 RATIO-2088028

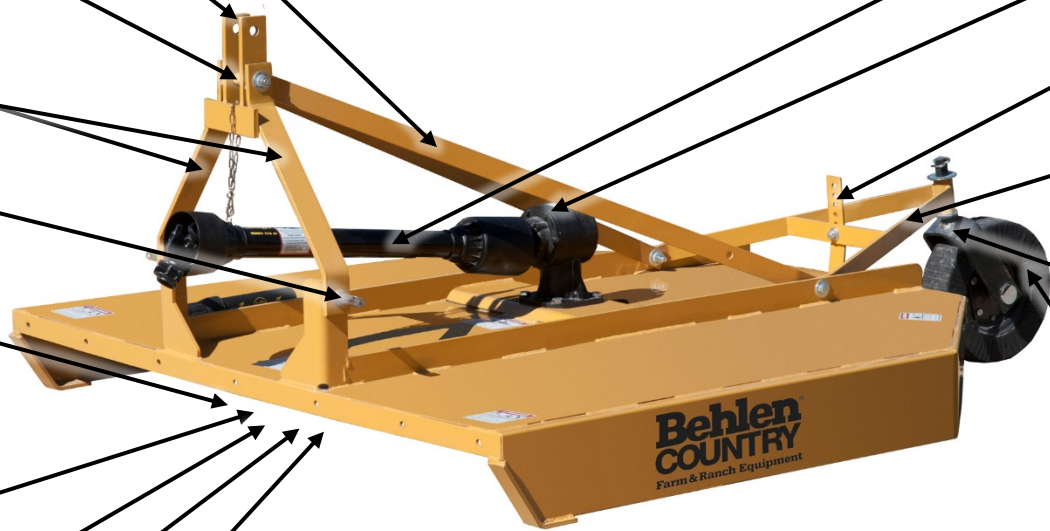
TAIL WHEEL ADJ. STRAP  
 80628130YEL

REAR A ARM  
 80412780YEL

TAIL WHEEL FORK  
 80412235

TAIL WHEEL ONLY  
 3988029

TAIL WHEEL  
 ASSEMBLY  
 3988031



**NOTES:**

BLADE NUT TORQUE 600FT LBS  
 APPROXIMATE LUBE CAPACITY 1 QT  
 FILL WITH 80w 90 GEAR OIL  
 PULL OUT SMALL AND LARGE PLUG FILL THRU TOP PLUG UNTIL OIL  
 SEEPS OUT OF SMALL PLUG.  
 REPLACE PLUGS  
 SNAP RING ON INPUT SHAFT TO GEAR BOX IS TO KEEP PTO SHAFT FROM  
 FALLING OFF WHEN SHEAR BOLT BREAKS.  
 INPUT SHAFT IS A 1-3/8" SMOOTH DIAMETER WITH A 1/2" SHEAR BOLT  
 SHEAR BOLT MUST BE GRADE 2 - 1/2" X 3.5 INCH DIAMETER BOLT  
 5HP PER 1 PER FOOT OF IMPLEMENT IS RECOMMENDED FOR  
 OPERATION. IE 6' CUTTER=30HP