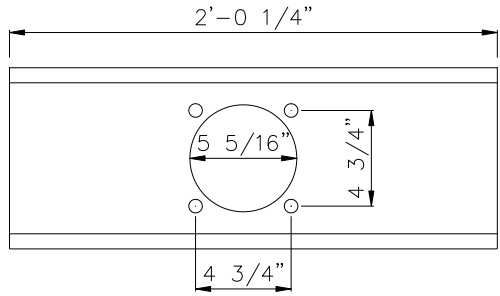
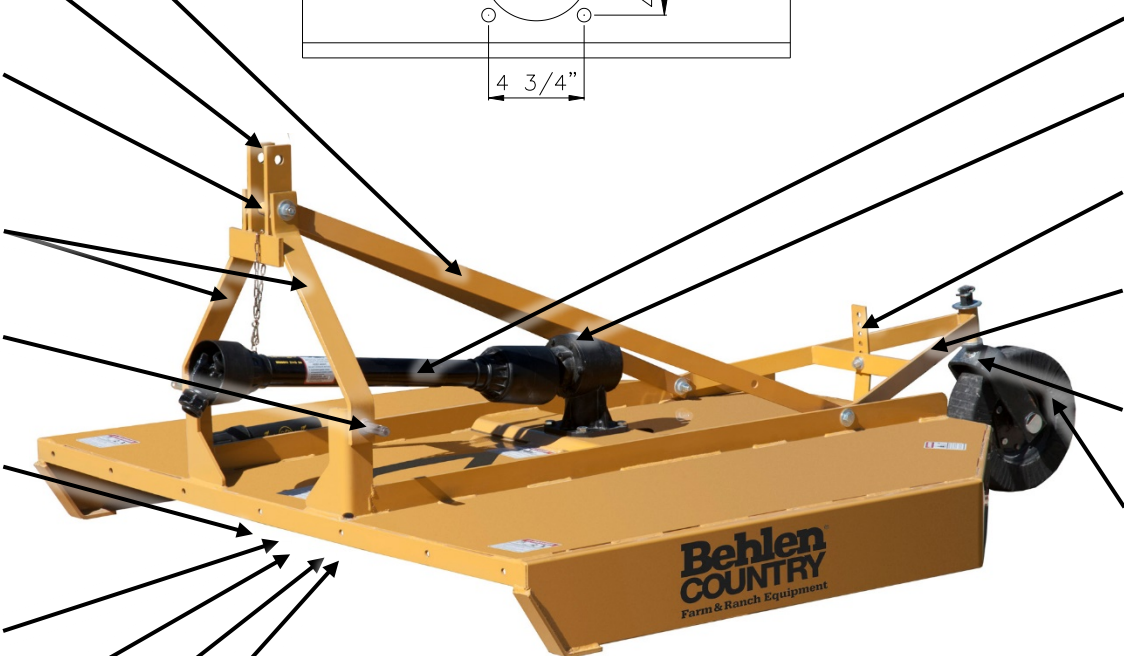


80110040YEL
4' ROTARY CUTTER



- FRONT A ARM BRACE
80634050YEL
- SWIVEL HITCH
80412770YEL
- A-FRAME 3 1/2"
BUSHING-80634080YEL
- A FRAME ARM
LH & RH-80633890YEL
- CAT 1 LIFT ARM PIN
7/8"-3018352
- STUMP JUMPER
40HP 12 SPLINE
2088026
- BLADES-3018433
- BLADE BOLT-1308012
- BLADE BOLT NUT
1308015
- BLADE BOLT
LOCK WASHER-1308016



- PTO SHAFT 35"-1728011
- 40HP GEAR BOX
1:1.93 RATIO-2088052
- TAIL WHEEL ADJ. STRAP
80628130YEL
- REAR A ARM
80412780YEL
- TAIL WHEEL FORK
80412235
- TAIL WHEEL ONLY
3988029

**TAIL WHEEL
 ASSEMBLY
 3988031**

NOTES:

BLADE NUT TORQUE 600FT LBS
 APPROXIMATE LUBE CAPACITY 1 QT
 FILL WITH 80w 90 GEAR OIL
 PULL OUT SMALL AND LARGE PLUG FILL THRU TOP PLUG UNTIL OIL SEEPS
 OUT OF SMALL PLUG.
 REPLACE PLUGS
 SNAP RING ON INPUT SHAFT TO GEAR BOX IS TO KEEP PTO SHAFT FROM
 FALLING OFF WHEN SHEAR BOLT BREAKS.
 INPUT SHAFT IS A 1-3/8" SMOOTH DIAMETER WITH A 1/2" SHEAR BOLT
 SHEAR BOLT MUST BE GRADE 2 - 1/2" X 3.5 INCH DIAMETER BOLT
 5HP PER 1 PER FOOT OF IMPLEMENT IS RECOMMENDED FOR
 OPERATION. IE 6' CUTTER=30HP