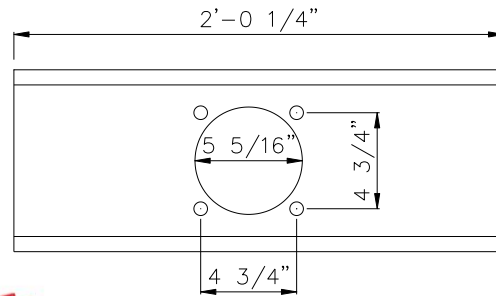
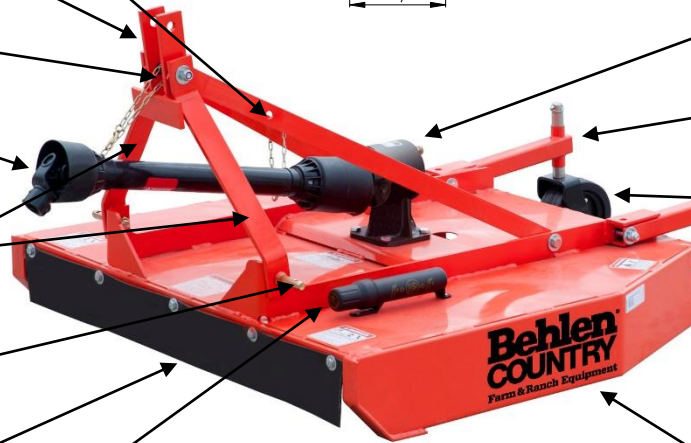


**80110030ORG
SUBCOMPACT
4' ROTARY CUTTER**



- FRONT A ARM BRACE
80634050ORG
- SWIVEL HITCH
80412770ORG
- A FRAME BUSHING
80634085
- PTO SHAFT 35"-1728011
- A FRAM ARM
LH & RH-80633890ORG
- CAT 1 LIFT ARM PIN
7/8"-3018352
- 4' CUTTER BELT GUARD
80636940
- Manual Holder
2948019



40HP GEAR BOX
1:1.93 RATIO-2088052

TAILWHEEL ARM
80402000ORG

WHEEL KIT
3988034

STUMP JUMPER
40HP 12 SPLINE
2088026

BLADES-3018433

BLADE BOLT-1308012

BLADE BOLT NUT
1308015

BLADE BOLT
LOCK WASHER-1308016

NOTES:

BLADE NUT TORQUE 600FT LBS
 APPROXIMATE LUBE CAPACITY 1 QT
 FILL WITH 80w 90 GEAR OIL
 PULL OUT SMALL AND LARGE PLUG FILL THRU TOP PLUG
 UNTIL OIL SEEPS OUT OF SMALL PLUG.
 REPLACE PLUGS
 SNAP RING ON INPUT SHAFT TO GEAR BOX IS TO KEEP
 PTO SHAFT FROM FALLING OFF WHEN SHEAR BOLT
 BREAKS.
 INPUT SHAFT IS A 1-3/8" SMOOTH DIAMETER WITH A 1/2"
 SHEAR BOLT
 SHEAR BOLT MUST BE GRADE 2 - 1/2" X 3.5 INCH
 DIAMETER BOLT
 5HP PER 1 PER FOOT OF IMPLEMENT IS RECOMMENDED
 FOR OPERATION. IE 4' CUTTER=20HP